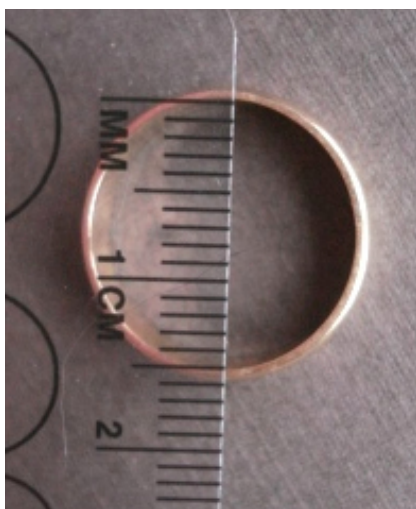


IF YOU ALREADY KNOW YOUR RING SIZE BY A DIFFERENT MEASUREMENT STANDARD PLEASE USE THE CONVERSION CHART.

At Signet Circle we measure the ring size of all our rings with an industry standard jewellers mandrel. The chart converts the actual ring size (mm) into some of the popular internationally recognized sizes. If you can not find a size in the chart that you are familiar with, please contact us.

Although all reasonable care is taken by Signet Circle to present true and accurate ring size conversions, some countries and regions have different interpretations of sizing. It always pays to check your true ring size at your local jewellery store before ordering rings to allow for these demographic variations in size interpretation.



| Size (mm) | Size (inches) | Diameter (mm) | Australia Size SIGNET CIRCLE | USA Size |
|-----------|---------------|---------------|------------------------------|----------|
| 48 | 1 14/16 | 15.27 | I 1/2 | 4 1/2 |
| 49 | 1 15/16 | 15.70 | J 1/2 | 5 |
| 51 | 2 | 16.10 | L | 5 1/2 |
| 52 | 2 1/16 | 16.51 | M | 6 |
| 53 | 2 2/16 | 16.92 | N | 6 1/2 |
| 55 | 2 3/16 | 17.35 | O | 7 |
| 56 | 2 4/16 | 17.75 | P | 7 1/2 |
| 57 | 2 5/16 | 18.19 | Q | 8 |
| 58 | 2 6/16 | 18.53 | Q 1/2 | 8 1/2 |
| 59 | 2 7/16 | 18.89 | R 1/2 | 9 |
| 61 | 2 8/16 | 19.41 | S 1/2 | 9 1/2 |
| 62 | 2 9/16 | 19.84 | T 1/2 | 10 |
| 63 | 2 10/16 | 20.20 | U 1/2 | 10 1/2 |
| 65 | 2 11/16 | 20.68 | V 1/2 | 11 |
| 66 | 2 12/16 | 21.08 | W 1/2 | 11 1/2 |
| 68 | 2 13/16 | 21.49 | Y | 12 |
| 69 | 2 14/16 | 21.89 | Z | 12 1/2 |
| 70 | 2 15/16 | 22.33 | -- | 13 |

Signet Circle offers all sizes available to Men and Women including 1/2 sizes. Select the ring size to suit your chosen signet ring finger.